

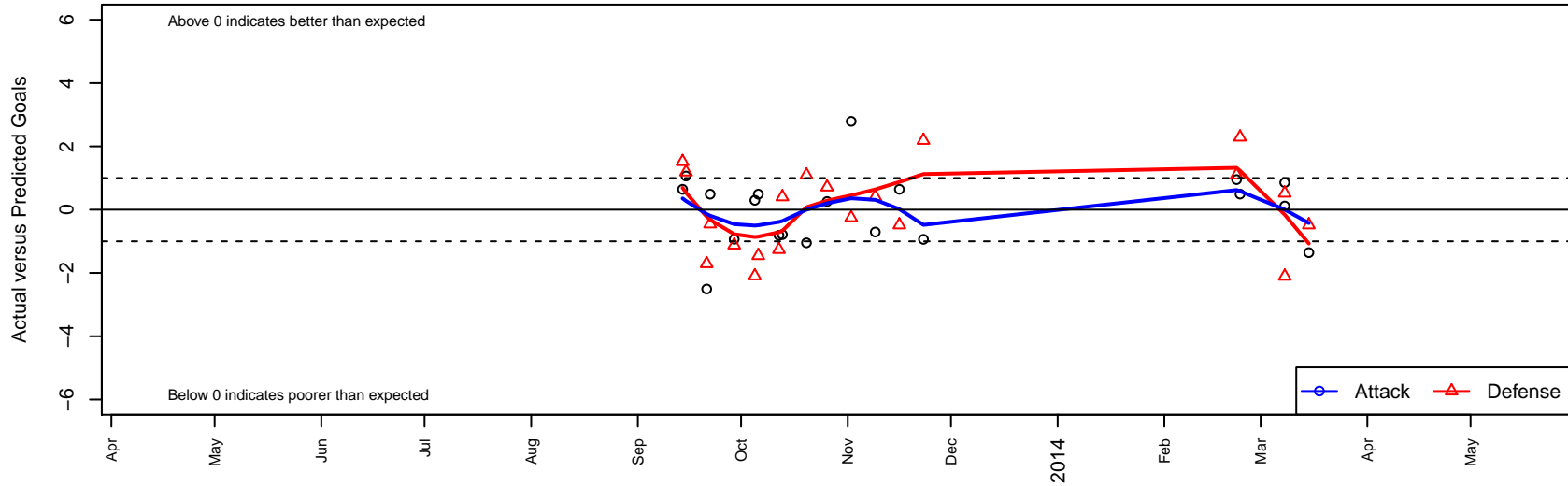
# Santa Barbara SC White B01

, CAS  
 B01 total strength=1018  
 attack=3.25 defense=1.4  
 fall league = SCDL FI1 U12  
 alt names used:  
 Santa Barbara SC BU12 White

Venues played:  
 SCDL FI1 U12  
 SoCal DL Fall Showcase Flight 1 U12  
 SoCal National Cup B01



**Santa Barbara SC White B01**  
 Dots are actual minus expected GF (blue circles) and GA (red triangles).  
 Blue line is smoothed change in attack strength. Red is smoothed change in defense strength.



|       | <b>date</b> | <b>home</b>                  |   | <b>away</b>                          |   | <b>venue</b>                        | <b>pred.home</b> | <b>pred.away</b> |
|-------|-------------|------------------------------|---|--------------------------------------|---|-------------------------------------|------------------|------------------|
| 24586 | 2014-03-15  | Real So Cal White B01        | 4 | Santa Barbara SC White B01           | 0 | SoCal National Cup B01              | 3.52             | 1.36             |
| 23903 | 2014-03-08  | TFA California B01           | 7 | Santa Barbara SC White B01           | 1 | SoCal National Cup B01              | 4.89             | 0.88             |
| 23918 | 2014-03-08  | Del Mar Sharks White B01     | 0 | Santa Barbara SC White B01           | 3 | SoCal National Cup B01              | 0.52             | 2.14             |
| 23222 | 2014-02-23  | Santa Barbara SC White B01   | 3 | LA Galaxy South Bay Gold B01         | 0 | SoCal National Cup B01              | 2.51             | 2.29             |
| 22959 | 2014-02-22  | Santa Barbara SC White B01   | 4 | FC Golden State Gold B01             | 0 | SoCal National Cup B01              | 3.05             | 1.09             |
| 19121 | 2013-11-23  | Santa Barbara SC White B01   | 2 | Exiles SC Black B01                  | 0 | SCDL FI1 U12                        | 2.94             | 2.19             |
| 18462 | 2013-11-16  | Santa Barbara SC White B01   | 2 | Real So Cal White B01                | 4 | SCDL FI1 U12                        | 1.36             | 3.52             |
| 17729 | 2013-11-09  | LA Galaxy Academy North B01  | 4 | Santa Barbara SC White B01           | 0 | SCDL FI1 U12                        | 4.41             | 0.71             |
| 16750 | 2013-11-02  | Santa Barbara SC White B01   | 5 | Manhattan Beach Sand and Surf B01    | 2 | SCDL FI1 U12                        | 2.21             | 1.75             |
| 15874 | 2013-10-26  | Santa Barbara SC White B01   | 2 | Strikers FC South Coast B01          | 1 | SoCal DL Fall Showcase Flight 1 U12 | 1.74             | 1.71             |
| 15313 | 2013-10-20  | FC Golden State Gold B01     | 0 | Santa Barbara SC White B01           | 2 | SCDL FI1 U12                        | 1.09             | 3.05             |
| 14335 | 2013-10-13  | Santa Barbara SC White B01   | 0 | FC Golden State Academy B01          | 3 | SCDL FI1 U12                        | 0.79             | 3.40             |
| 13883 | 2013-10-12  | Santa Barbara SC White B01   | 0 | Los Angeles Futbol Academy Black B01 | 5 | SCDL FI1 U12                        | 0.81             | 3.74             |
| 13295 | 2013-10-06  | FRAM Premier B01             | 3 | Santa Barbara SC White B01           | 2 | SCDL FI1 U12                        | 1.55             | 1.51             |
| 12861 | 2013-10-05  | Santa Barbara SC White B01   | 1 | LA Galaxy Academy South B01          | 7 | SCDL FI1 U12                        | 0.70             | 4.91             |
| 12332 | 2013-09-29  | FC Los Angeles Black B01     | 4 | Santa Barbara SC White B01           | 0 | SCDL FI1 U12                        | 2.88             | 0.93             |
| 11397 | 2013-09-22  | Santa Barbara SC White B01   | 2 | FRAM Premier B01                     | 2 | SCDL FI1 U12                        | 1.51             | 1.55             |
| 10970 | 2013-09-21  | LA Galaxy South Bay Gold B01 | 4 | Santa Barbara SC White B01           | 0 | SCDL FI1 U12                        | 2.29             | 2.51             |
| 10428 | 2013-09-15  | Exiles SC Black B01          | 1 | Santa Barbara SC White B01           | 4 | SCDL FI1 U12                        | 2.19             | 2.94             |
| 10000 | 2013-09-14  | Real So Cal White B01        | 2 | Santa Barbara SC White B01           | 2 | SCDL FI1 U12                        | 3.52             | 1.36             |